



The 1000 kN – 5000 kN servo-electric press family

The servo-electric presses for 1000 kN to 5000 kN with electric drive technology offer unmatched precision and accuracy. Requirements for more complex geometries and full net-shape parts demand pioneer technology and performance.

Features

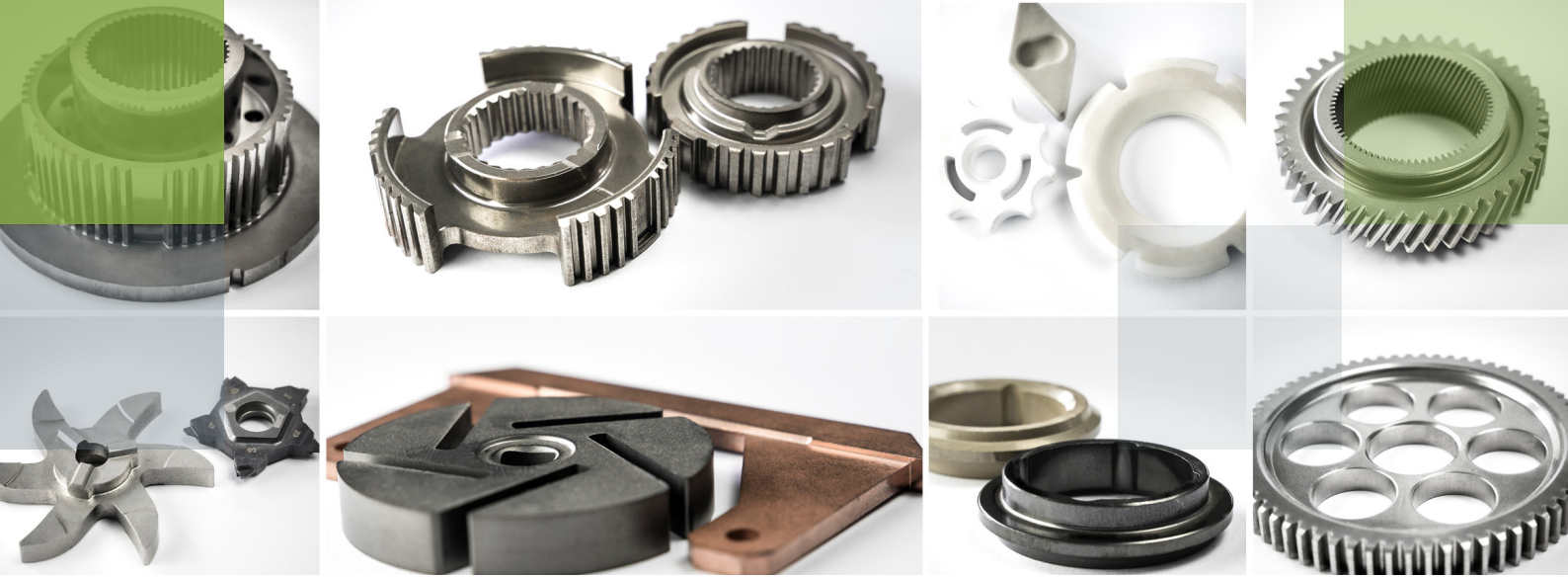
- Long lifetime of press
- High O.E.E.
- Short R.O.I.
- Outstanding and unmatched green part quality
- Low energy consumption
- Minimum manual operation required
- User friendly interface
- Stroke rates up to 25 pcs/min
- Full force (1000 – 5000 kN) on mechanical counterforces and high active counterforces
- Highest repetition- and process accuracy
- Ergonomic press room – superior space for the setup of the press
- Low noise level
- Reduced maintenance requirements

OPP Multiplate Press Family

1000 kN - 5000 kN

Savings on electric consumption, less service costs, higher uptime on technical availability with more output at less maintenance, a large customer base and sustainable development makes this press family the reference for the PM industry.

Benefits	OPP	1000	2000	5000
Electric main drives		●	●	●
No Pit required		●	●	
Minimized installation costs and footprint on customer site		●	●	●
Highly ergonomic and safe tool change option			●	●
Toggle lever force transmission			●	●
Servo-drive-controlled Helica applications possible			●	
Helical applications possible		●	●	●



Main Specifications	OPP 1000			OPP 2000			OPP 5000		
Plates	up to 3/2			up to 4/4			up to 4/3		
	Active counter-force (kN)	Mechanical counter-force (kN)	Stroke (mm)	Active counter-force (kN)	Mechanical counter-force (kN)	Stroke (mm)	Active counter-force (kN)	Mechanical counter-force (kN)	Stroke (mm)
Top ram axis (A)	1000	-	300	-	2000	350	-	5000	300
Upper additional axis (X11)	154	1000	60	270	1400	60	425	3500	50
Upper additional axis (X12)	154	1000	60	270	2000	60	425	3500	50
Upper additional axis (X13)	-	-	-	270	2000	60	425	5000	50
Upper add'l axis (X14 - opt.)	-	-	-	105	800	60	-	-	-
Die (B)	500	-	180	640	-	320 mm (3/3 195mm)	1500	-	420
Withdrawal Force Die(B)	500	-	-	640	-	-	1500	-	-
Lower additional axis (X1)	154	1000	80	270	1400	80	425	3500	80
Lower additional axis (X2)	154	1000	80	270	2000	95	425	3500	80
Lower additional axis (X3)	154	1000	80	270	2000	75	425	5000	80
Lower add'l axis (X14 - opt.)	-	-	-	105	800	70	425	2000	80
Lower core rod (N)	55	-	175	75	-	180	200	-	250
Withdr. Force core rod (N)	31	-	-	40	-	-	130	-	-
Filling height	175 mm			180 mm			250 mm		
Repeatability top ram (A)	± 2 µm								

Illustrations in this document may feature optional equipment or deviations and products are subject to continuous technical modifications and thus are without obligation.



Pioneer.Partnership.Performance.

SWITZERLAND
Osterwalder AG, Headquarter
Industriering 4
3250 Lyss

Tel +41 32 387 14 00
info@osterwalder.com
www.osterwalder.com

USA
Osterwalder Inc.
1825 Franklin Street, Suite A
Northampton, PA 18067

Tel +1 610 262 20 09
info@osterwalder.us
www.osterwalder.com

CHINA
Osterwalder Technology Co., Ltd.
Room 801, Jingheng Plaza
2008 Huiqingping Road
Shanghai 201702 / P.R.
Tel +86 21 69 79 50 66
info@osterwalder.cn
www.osterwalder.com

JAPAN
Osterwalder Japan K.K. 14F Hibiya
Central Building, 1-2-9 Nishi-Shinbashi
Minato-ku, Tokyo, 105-0003

Tel +81 3 5532 5661
info@osterwalder.com
www.osterwalder.com